



# PAKISTAN NOTICES TO MARINERS

## WEEKLY EDITION 04

Notice: 07 – 11(P)/23

28 JAN 2023

Copies of these Notices can be obtained gratis from Mercantile Marine Department and PN Chart Depot / NAVAREA IX Headquarters, 11 Liaquat Barracks Karachi. The same can be downloaded from web: [hydrography.paknavy.gov.pk](http://hydrography.paknavy.gov.pk).

### CONTENTS

- I NOTICES TO MARINERS
- II REPRINTS OF RADIO NAVIGATIONAL WARNINGS
- III CORRECTIONS TO SAILING DIRECTIONS
- IV MARINE INFORMATION

Mariners are requested to inform the Hydrographic Department, Naval Headquarters, 11 Liaquat Barracks, Karachi, Pakistan, immediately on the discovery of new dangers, or suspected dangers to navigation and of changes or defects in aids to navigation noticed in NAVAREA IX and of shortcomings in PAK charts or publications.

Tel : + 92-21-48506151  
+ 92-21-48506152  
Fax : + 92-21-99201623  
+ 92-21-35867737

E-mail : [hydropk@paknavy.gov.pk](mailto:hydropk@paknavy.gov.pk)  
[hydrpk@gmail.com](mailto:hydrpk@gmail.com)

Web : [hydrography.paknavy.gov.pk](http://hydrography.paknavy.gov.pk).

**MUHAMMAD WASIM**  
Captain Pakistan Navy  
Hydrographer

**Hydrographic Department, Naval Headquarters, 11 Liaquat Barracks, Karachi 75530, PAKISTAN**

**PART – I**  
**NOTICES TO MARINERS**

**07/23 UNITED ARAB EMIRATES - NM Blocks.**

**BA Chart 2888 (INT 7199)** [ *previous update 5006/22* ] WGS84 DATUM

Insert the accompanying block, centred on: 25° 30'·9N., 56° 22'·1E.

**BA Chart 3171** [ *previous update 2703/22* ] WGS84 DATUM

Insert the accompanying block, centred on: 25° 33'·7N., 56° 22'·8E.

**BA Chart 3520 (INT 7200)** [ *previous update 2703/22* ] WGS84 DATUM

Insert the accompanying block, centred on: 25° 30'·9N., 56° 22'·8E.

**BA Chart 3723** [ *previous update 131/23* ] WGS84 DATUM

Insert the accompanying block, centred on: 25° 25'·0N., 56° 23'·2E.

Source: Admiralty Notice to Mariners No. 300/2023.

**08/23 EGYPT - Suez Canal - Depth.**


**BA Chart 240 (INT 3549) (Panel A, Suez Canal Container Terminal)** [ *previous update New Edition 04/03/2021* ] WGS84 DATUM

Insert depth, 13<sub>6</sub> 31° 13'·156N., 32° 21'·448E.

Source: Admiralty Notice to Mariners No. 306/2023.


**09\*/23 UNITED ARAB EMIRATES - Pilot boarding places. Radar beacons. Buoyage.**

**BA Chart 3176 (INT 7216)** [ *previous update 5181/22* ] WGS84 DATUM

Move  LFl.10s KP-FW and associated radar beacon, Racon(Q), from: 24° 56'·79N., 54° 34'·20E.  
to: 24° 56'·29N., 54° 34'·66E.

**BA Chart 3177 (INT 7222)** [ *previous update 54/23* ] WGS84 DATUM

Insert  24° 33'·80N., 54° 20'·10E.  
24° 26'·80N., 54° 14'·00E.

Delete former  24° 30'·14N., 54° 17'·89E.  
24° 29'·00N., 54° 14'·20E.

Move  from: 24° 39'·50N., 54° 13'·80E.  
to: 24° 39'·08N., 54° 14'·42E.

**BA Chart 3713 (INT 7223)** [ *previous update 54/23* ] WGS84 DATUM

Insert  24° 39'·10N., 54° 14'·30E.  
24° 33'·80N., 54° 20'·10E.

 *Vessels less than 5·0m draught* 24° 26'·80N., 54° 14'·00E.

Delete former  24° 39'·53N., 54° 13'·80E.

 24° 30'·10N., 54° 17'·90E.

former  *Vessels less than 5·0m draught* 24° 29'·00N., 54° 14'·20E.


**BA Chart 3715 (INT 7224)** [ *previous update 54/23* ] WGS84 DATUM

Insert  24° 33'·80N., 54° 20'·10E.


Delete  24° 30'·10N., 54° 17'·90E.

**BA Chart 3752 (Panel B, Khalifa Port)** [ *previous update 2654/22* ] WGS84 DATUM

Insert  LFl.10s KP-FW (a) 24° 56'·29N., 54° 34'·66E.  
radar beacon, Racon(Q), at light-buoy (a) above

Delete former  LFl.10s KP-FW and associated radar beacon, Racon(Q) 24° 56'·79N., 54° 34'·20E.

**BA Chart 3752 (Panel A, Approaches to Khalifa Port) [ previous update 2654/22 ] WGS84 DATUM**

Move  *LFL10s KP-FW* and associated radar beacon, *Racon(Q)*, from: 24° 56′.79N., 54° 34′.21E.  
to: 24° 56′.29N., 54° 34′.66E.

Source: Admiralty Notice to Mariners No. 338\*/2023.

**10(P)/23 QATAR - Restricted areas.**

1. A restricted area, entry restricted, has been established bounded by the following positions:

- 26° 47′.08N., 51° 55′.43E.
- 26° 34′.12N., 52° 10′.90E.
- 26° 26′.30N., 52° 19′.72E.
- 26° 23′.05N., 52° 18′.47E.
- 26° 19′.07N., 52° 07′.50E.
- 26° 17′.70N., 52° 00′.48E.
- 26° 21′.90N., 51° 56′.03E.
- 26° 32′.87N., 51° 49′.57E.
- 26° 37′.88N., 51° 49′.92E.

2. Restricted areas, entry restricted, have been established, radius 1000m (0.54M), centred on the following positions:

Platform	Position
	26° 28′.94N., 51° 45′.61E.
WH-8	26° 14′.59N., 52° 00′.97E.
WH-9	26° 13′.58N., 51° 56′.31E.
NFQ14	26° 06′.30N., 52° 08′.55E.
NFQ15	26° 00′.97N., 52° 11′.13E.
NFQ16	25° 54′.26N., 52° 07′.74E.
NFQ17	25° 57′.46N., 52° 01′.75E.
NFQ18	25° 51′.28N., 52° 02′.37E.
NFQ19	25° 51′.93N., 51° 55′.56E.
NFQ20	26° 14′.53N., 52° 19′.74E.
NFQ21	26° 09′.94N., 52° 15′.09E.

- 3. Mariners are advised to navigate with caution in the area and obtain permission from the relevant authorities before entering these areas.
- 4. These changes will be included in the next New Edition of BA Chart 2523 to be published early 2023.
- 5. BA Charts 2837, 2847, 2883, 2886, 2887 and 3950 will be updated by Notice to Mariners. (WGS84 DATUM)

**BA Chart affected - 2523 (INT 7250)**

Source: Admiralty Notice to Mariners No. 342(P)/2023.

**11(P)/23 UNITED ARAB EMIRATES - Buoyage. Works.**

- 1. The Inner Harbour Channel (24° 47′ .75N. , 54° 39′ .54E. ) within Khalifa Port has been permanently closed.
- 2. The following light-buoys have been removed:

Characteristic	Designation	Position
<i>Fl(4)R.10s</i>	<i>KP-22</i>	24° 48′ .23N. , 54° 39′ .48E.
<i>VQ.R</i>	<i>HM</i>	24° 47′ .89N. , 54° 39′ .20E.
<i>VQ.G</i>	<i>IHC-1</i>	24° 47′ .74N. , 54° 39′ .30E.
<i>VQ.R</i>	<i>IHC-2</i>	24° 47′ .82N. , 54° 39′ .33E.
<i>VQ.G</i>	<i>IHC-3</i>	24° 47′ .67N. , 54° 39′ .78E.
<i>VQ.R</i>	<i>IHC-4</i>	24° 47′ .75N. , 54° 39′ .79E.
<i>VQ.G</i>	<i>IHC-5</i>	24° 47′ .59N. , 54° 40′ .24E.
<i>VQ.R</i>	<i>IHC-6</i>	24° 47′ .67N. , 54° 40′ .27E.
<i>Fl.G.3s</i>	<i>IHC-7</i>	24° 47′ .53N. , 54° 40′ .71E.
<i>Fl.R.3s</i>	<i>IHC-8</i>	24° 47′ .60N. , 54° 40′ .73E.

- 3. The South Quay development (24° 48′ .10N., 54° 39′ .60E.) is complete and dredged to 18.5m.
- 4. \*A 250m wide dredged channel, depth 16.0m, linking the existing Khalifa Port Basin (24° 48′.80N., 54° 40′.20E. ) to the new Khalifa Port Logistic Terminal (24° 47′.90N., 54° 41′.00E. ) has been established.
- 5. \*The Logistic Terminal development (24° 47′.84N., 54° 41′.58E. ) is complete. Berths 1-13 are dredged to 8m and berths 14-17 are dredged to 16m.
- 6. \* Aids to navigation have been established, marking the new channel and basin.
- 7. BA Charts will be updated when full details are available.
- 8. Mariners are advised to navigate with caution in the area and consult the local port authorities for the latest information.
- 9. \*Former Notice 2646(P)/22 (PAK Notice 86(P)/22) is cancelled.  
\*Indicates new or revised entry.  
(WGS84 DATUM)

**BA Chart affected - 3752**

Source: Admiralty Notice to Mariners No. 344(P)/2023.

**PART – II**  
**RADIO NAVIGATIONAL WARNINGS**

**033/23. SOUTHERN GULF.** UAE. Charts BA 2858, 2889, 3177 and 3178. Seismic survey in progress from 22 to 28 Jan 23 in following areas:

Receiver Boundary

- 24-46.16N 053-41.32E
- 24-46.03N 053-48.36E
- 24-42.61N 053-48.28E
- 24-40.93N 053-47.26E
- 24-41.06N 053-41.23E

Source Boundary

- 24-49.40N 053-41.41E
- 24-49.28N 053-48.10E
- 24-42.06N 053-47.95E
- 24-40.93N 053-47.26E
- 24-41.04N 053-41.21E

Fishing, anchoring and diving operations are strictly prohibited in survey areas. Mariners are advised to navigate with caution and maintain listening watch on channels 16/72. Cancel this message on 292359 UTC Jan 23.

**034/23. SAUDI ARABIA.** Jizan. Charts BA 15, 157 and 2964. Jizan approach channel buoys reported unlit/damaged/missing from charted position as under:

<b>Buoy</b>	<b>Positions</b>	<b>Type and Issue</b>
101	16-56.77N 041-17.37E	Safe Water (Unlit)
102	16-56.71N 041-18.84E	Stbd Lateral (Unlit)
104	16-59.72N 041-19.28E	Isolated Danger (Missing)
108	17-08.41N 041-24.40E	Stbd Lateral (Missing)
110	17-13.52N 041-34.57E	Stbd Lateral (Unlit)
111	17-14.70N 041-33.30E	Port Lateral (Missing)
112a	17-19.15N 041-40.95E	Port Lateral (Unlit)
113	17-15.45N 041-49.63E	Port Lateral (Unlit)
117	17-06.25N 042-03.82E	Port Lateral With Recon B (Unlit)
118	17-02.30N 042-02.10E	Stbd Lateral (Unlit)
122	17-04.95N 042-10.41E	Stbd Lateral (Damaged Unlit)
124	17-09.82N 042-13.02E	Port Lateral(Damaged Unlit)
129	17-13.47N 042-14.49E	Port Lateral Mark (Unlit)
209	17-17.81N 042-07.10E	Special Mark (Unlit)
210	17-15.39N 042-16.09E	Special Mark (Unlit)
211	17-17.38N 042-15.15E	Special Mark (Unlit)
212	17-17.51N 042-12.61E	Special Mark (Unlit)
213	17-14.45N 042-12.07E	Special Mark (Unlit)
214	17-15.40N 042-08.20E	Special Mark (Unlit)
215	17-19.48N 042-07.29E	Special Mark (Unlit)
216	17-20.30N 042-10.09E	Special Mark (Unlit)
217	17-20.30N 042-11.70E	Special Mark (Unlit)
302	17-14.64N 042-16.97E	Port Lateral Mark (Unlit)
303	17-14.76N 042-17.41E	Stbd Lateral Mark (Unlit)
307	17-15.29N 042-18.05E	Stbd Lateral Mark (Unlit)
308	17-15.44N 042-17.92E	Port Lateral Mark (Unlit)
313	17-16.09N 042-19.01E	Stbd Lateral Mark (Missing)
314	17-16.24N 042-18.89E	Port Lateral Mark (Missing)
316	17-16.50N 042-19.21E	Port Lateral Mark (Unlit)
602	17-14.92N 042-10.13E	Special Mark (Unlit)
603	17-16.60N 042-07.65E	Special Mark (Unlit)
604	17-17.80N 042-09.00E	Special Mark (Unlit)
606	17-18.65N 042-07.19E	Special Mark (Unlit)
607	17-19.88N 042-08.69E	Special Mark (Unlit)
608	17-17.44N 042-13.88E	Special Mark (Unlit)
609	17-16.72N 042-15.46E	Special Mark (Unlit)
610	17-16.05N 042-15.79E	Special Mark (Unlit)
611	17-14.43N 042-15.29E	Special Mark (Unlit)
908	17-14.46N 042-16.58E	Port Lateral Mark (Unlit)

Mariners cautioned.

**035/23. SOUTHERN GULF.** UAE. Charts BA 2444 and 3413. SPM-6 in position 25-08.14N, 052-55.69E reported unlit. Mariners cautioned.

**036/23. PAKISTAN.** Gwadar. Charts PAK 26, 27, 33, 57 (INT 751), BA 38 and 707. Live weapon firing will be conducted on 26 and 27 Jan 2023, details as under:

Position : 25-05.88N 062-22.27E  
 Safety Range : 18000 Meters  
 Firing Arcs : 130-220 Degree (Clockwise)  
 Time : 0300-1200 UTC

Vessels are advised to keep well clear of assigned danger area. Cancel this message on 271400 UTC Jan 2023

**037/23. SELF CANCELLING.** Operation completed. Cancel Navarea IX warning 332 of 2022.

**038/23. ARABIAN SEA.** Pakistan. Charts PAK 33, 57 (INT 751), BA 38 and 707. Naval ships will conduct surface, anti aircraft and depth charge live firing practice between 0400 to 1700 UTC from 01-03, 06-10, 13-17, 20-24 and 27-28 Feb 23 in following areas:

a.

24-19.00N 066-58.00E  
 24-00.00N 066-39.00E  
 24-11.00N 066-27.00E  
 24-24.30N 066-42.00E

b.

24-36.02N 063-15.03E  
 24-36.02N 062-30.03E  
 24-21.02N 062-30.03E  
 24-21.02N 063-15.03E

c.

24-36.02N 062-30.03E  
 24-36.02N 061-45.03E  
 24-21.02N 061-45.03E  
 24-21.02N 062-30.03E

d. Depth charge firing area

24-16.18N 066-20.50E  
 24-22.00N 066-27.00E  
 24-16.30N 066-33.00E  
 24-10.30N 066-27.00E

Mariners cautioned. Cancel this message on 281800 UTC Feb 23.

**039/23. CENTRAL GULF.** Qatar. Charts BA 2523, 2886, 3950 and 3772. Saturation diving and ROV operations in progress by vessel Posh Mallard from port Ras Laffan to Block-5 Al Shaheen Field till 27 Mar 23 on following route:

WP1 25-55.63N 051-36.26E  
 WP2 25-55.70N 051-36.60E  
 WP3 25-55.45N 051-39.00E  
 WP4 25-55.16N 051-41.00E  
 WP5 25-57.00N 051-45.00E  
 WP6 26-27.00N 051-56.60E  
 WP7 26-34.60N 052-00.75E

Mariners cautioned.

**040/23. SOUTHERN GULF.** UAE. Jazirat Das. Charts BA 2444 2889 and 3413. TMB buoys 3 and 6 reported adrift. Last position of buoys as follows

TMB-3 25-08.16N, 052-53.10E  
 TMB-6 25-08.13N, 052-53.30E

Mariners cautioned. Cancel this message on 29 Jan 23.

**041/23 SELF CANCELLING.** Navigational Warnings Inforce:

2021 series: 024, 086, 109, 223, 224, 397, 399, 408, 445, 448, 490 and 491.  
 2022 series: 027, 039, 067, 080, 095, 102, 112, 142, 144, 180, 185, 198, 211, 218, 220, 227, 257, 294, 295, 296, 311, 313, 319, 325, 328, 331, 356, 357, 358, 366, 377, 380, 402, 408, 424, 440, 465, 477, 478, 479, 480, 483, 485, 489, 497, 501, 502, 505, 506, 507, 510, 513 and 518.  
 2023 series: 004, 007, 008, 009, 010, 020, 025, 028, 029, 033, 034, 035, 038, 039 and 40.

**COASTAL WARNING**

**007/23. PAKISTAN.** Gwadar. Charts PAK 26, 27, 33, 57 (INT 751), BA 38 and 707. Live weapon firing will be conducted on 26 and 27 Jan 2023, details as under:

Position : 25-05.88N 062-22.27E  
 Safety Range : 18000 Meters  
 Firing Arcs : 130-220 Degree (Clockwise)

Time : 0300-1200 UTC

Vessels are advised to keep well clear of assigned danger area. Cancel this message on 271400 UTC Jan 2023

**008/23. ARABIAN SEA.** Pakistan. Charts PAK 33, 57 (INT 751), BA 38 and 707. Naval ships will conduct surface, anti aircraft and depth charge live firing practice between 0400 to 1700 UTC from 01-03, 06-10, 13-17, 20-24 and 27-28 Feb 23 in following areas:

a.

24-19.00N 066-58.00E  
 24-00.00N 066-39.00E  
 24-11.00N 066-27.00E  
 24-24.30N 066-42.00E

b.

24-36.02N 063-15.03E  
 24-36.02N 062-30.03E  
 24-21.02N 062-30.03E  
 24-21.02N 063-15.03E

c.

24-36.02N 062-30.03E  
 24-36.02N 061-45.03E  
 24-21.02N 061-45.03E  
 24-21.02N 062-30.03E

d. Depth charge firing area

24-16.18N 066-20.50E  
 24-22.00N 066-27.00E  
 24-16.30N 066-33.00E  
 24-10.30N 066-27.00E

Mariners cautioned. Cancel this message on 281800 UTC Feb 23.

**009/22. SELF CANCELLING.** Navigational Warnings Inforce:

2020 Series: 143.  
 2021 Series: 136.  
 2022 Series: 024, 027, 060, 063, 081, 082, 096 and 130.  
 2023 Series: 003 and 008

WPGs Inforced 2023: 03 and 05  
 WPGs Cancelled 2023: 04

**TEMPORARY AND PRELIMINARY NOTICES**

*In Force 20 January 2023*

*(Former In Force List dated 23 December 2022 is cancelled)*

Inforce: 92(T)/13, 92(T)/14, 51(T)/16, 136(P)/16, 150(P)/16, 173(P)/16, 83(P)/17, 99(T)/17, 115(P)/17, 129(P)/17, 140(T)/17, 169(T)/17, 176(T)/17, 184(P)/17, 57(T)/18, 101(T)/18, 131(P)/18, 27(P)/19, 55(P)/19, 73(T)/19, 78(T)/19, 108(P)/19, 110(P)/19, 112(P)/19, 173(T)/19, 234(P)/19, 58(T)/20, 87(T)/20, 95(P)/20, 111(P)/20, 134(P)/20, 140(P)/20, 160(T)/20, 176(P)/20, 04(T)/21, 06(T)/21, 15(T)/21, 46(T)/21, 69(T)/21, 109(P)/21, 111(T)/21, 122(P)/21, 124(T)/21, 143(T)/21, 144(P)/21, 145(P)/21, 156(T)/21, 15(P)/22, 16(P)/22, 17(P)/22, 20(P)/22, 25(T)/22, 26(P)/22, 38(P)/22, 39(T)/22, 45(P)/22, 48(P)/22, 56(P)/22, 75(T)/22, 76(P)/22, 77(T)/22, 79(T)/22, 82(T)/22, 106(T)/22, 113(P)/22, 114(T)/22, 124(T)/22, 139(P)/22, 145(P)/22, 146(P)/22, 153(P)/22, 03(T)/23, 06(P)/23, 10(P)/23 and 11(P)/23

Cancelled: 110(T)/21, 86(P)/22, 129(T)/22 and 152(T)/22

**PART – III**

**CORRECTIONS TO SAILING DIRECTIONS**

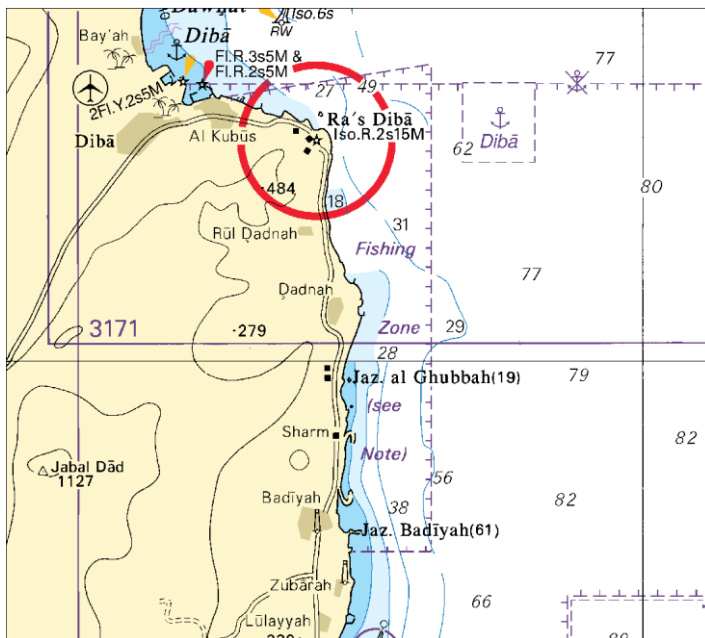
Nil

**PART – IV**

**MARINE INFORMATION**

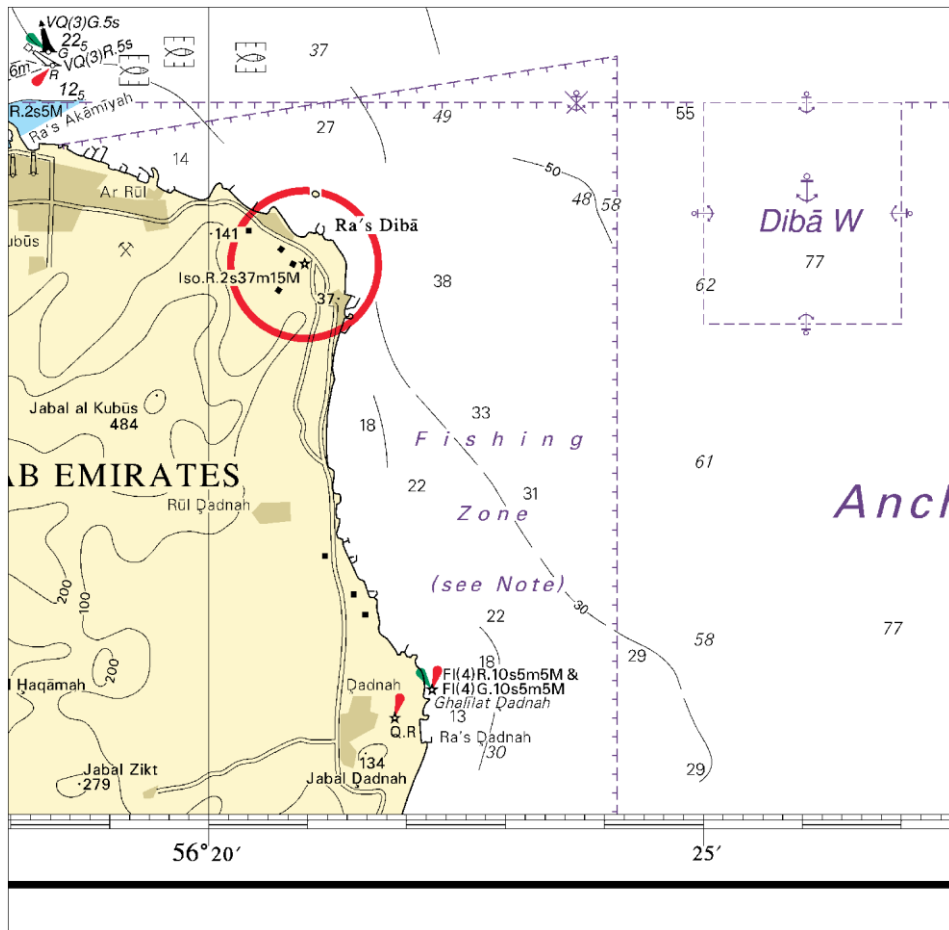
Nil

To accompany Pakistan Notice to Mariners 08/23.



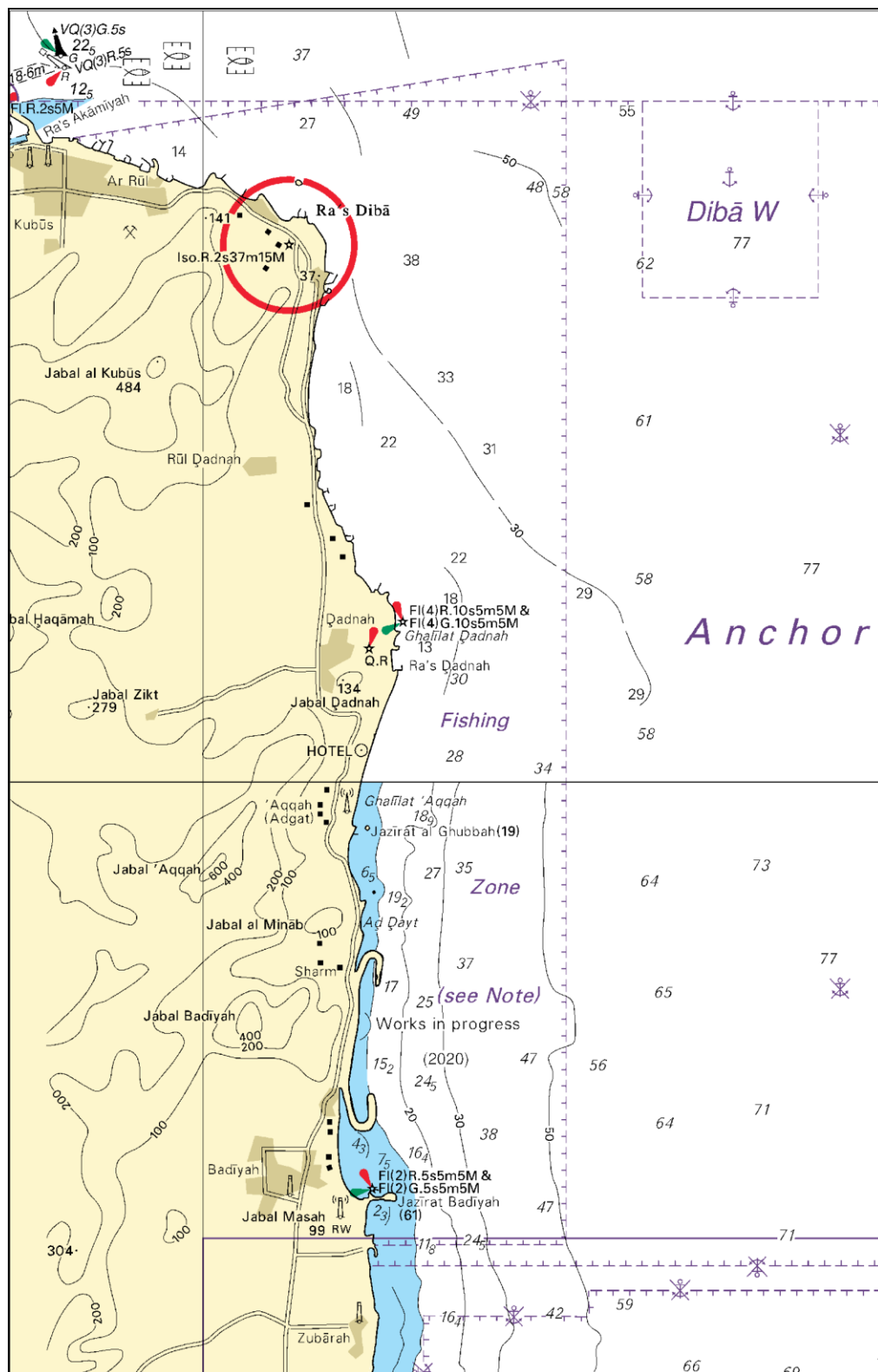
Block for BA Chart No. 2888

To accompany Pakistan Notice to Mariners 08/23.



Block for BA Chart No. 3171

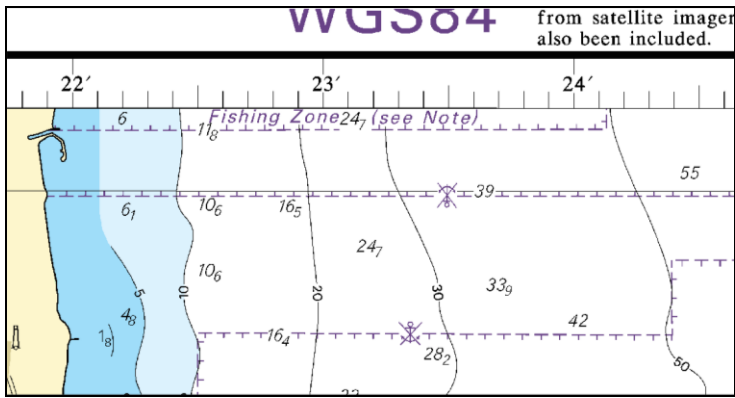
To accompany Pakistan Notice to Mariners 08/23.



Block for BA Chart No.3520



To accompany Pakistan Notice to Mariners 08/23.



Block for BA Chart No.3723